

WH 3000

Alluminium alloy structure

Ratio 38:1 - Reduction unit with worm wheel and irreversible worm-screw.

(Reverse motion is possible only when the operator acts on the relevant controls, therefore no brake is required).

Manual clutch for drum engagement – disengagement

Direct line pull force (as measured by spring scale gauge): 3000 kg at the 1st rope layer

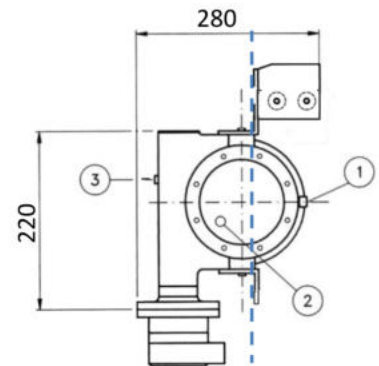
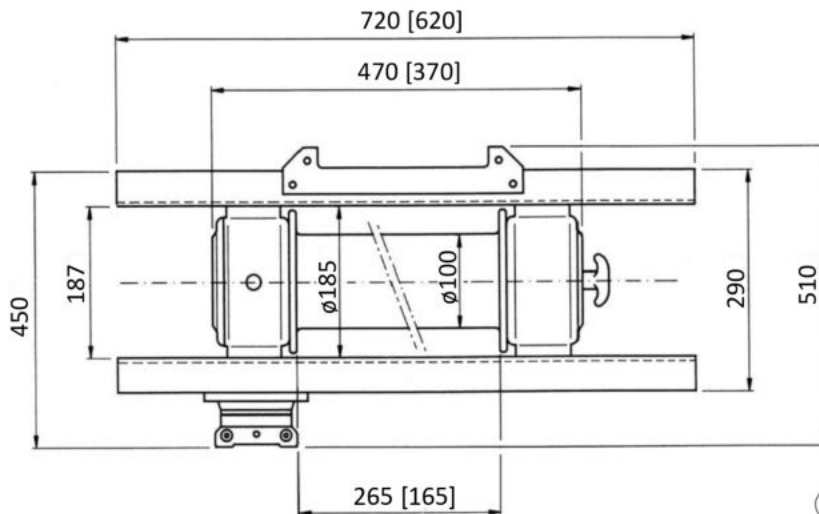
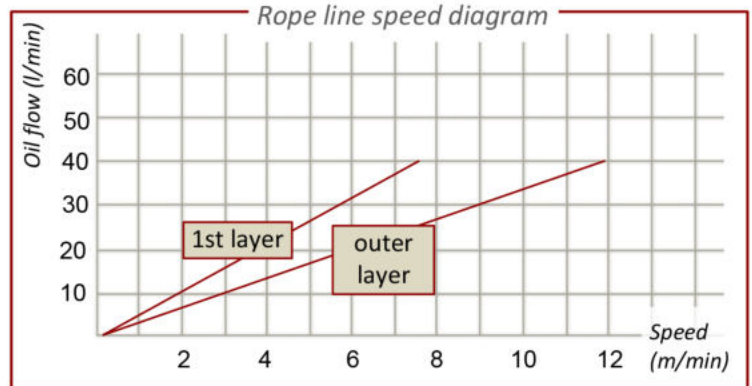
Towing capacity: 9000 kg at the 1st rope layer

Recommended rope length: \varnothing 10mm max 25m+40m (depending on the drum version)

Zinc-plated steel fairlead rollers.

Total weight w/out rope: 38 kg

Max P (relief valve adj.): 140 bar
Suggested flow to motor: 40 l/min



Dimensions of the standard version
[dimensions of the short-drum version]

- ① Oil filling plug
- ② Oil level plug
- ③ Oil drain plug

ROPE LAYER	DIRECT LINE PULL	TOWING CAPACITY*	ROPE LENGTH
1°	3020 kg	9060 kg	8,73m [5,44m]
2°	2540 kg	7620 kg	19,13m [11,91m]
3°	2180 kg	6540 kg	31,19m [19,42m]
4°	1920 kg	5760kg	44,91m [27,96m]
Max capacity of spooled rope: 40m \varnothing 10mm [25m]			

* = Pulling capacity (estimated weight of the vehicle to be towed on a flat surface, free wheels) uses to be about 3 times as the direct line pull as measured by spring scale.